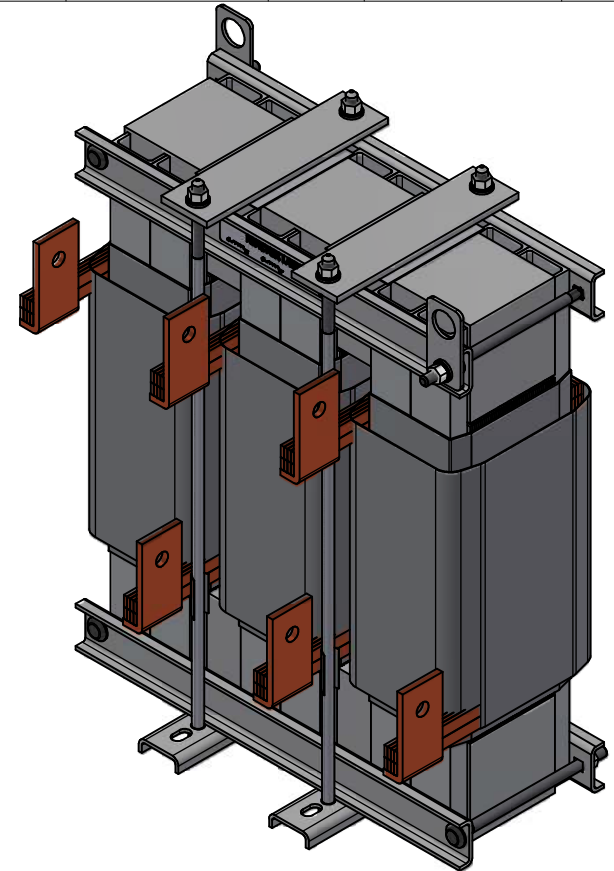
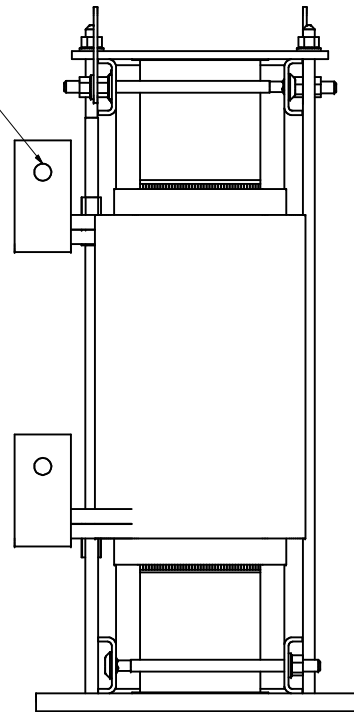


0.53 Dia Holes
6 Places



TCI Part Number	Horsepower (HP)	Amps	---uH +8%/-2%	Weight (LBS)
KTR270A65HG	900	516	102	340

Customer Is Responsible For Installation to Meet All National And Local Electrical Codes.

Material(s) Shall be RoHS Compliant

THE INFORMATION AND DESIGNS CONTAINED IN THIS DRAWING ARE CONFIDENTIAL AND THE PROPRIETARY PROPERTY OF ALLIED MOTION TECHNOLOGIES INC. AND ITS SUBSIDIARIES. NEITHER THIS DESIGN NOR ANY INFORMATION CONTAINED IN THIS DRAWING MAY BE REPRODUCED OR DISCLOSED TO OTHERS WITHOUT THE EXPRESS WRITTEN CONSENT OF ALLIED MOTION TECHNOLOGIES INC. AND ITS SUBSIDIARIES.				TOLERANCES (EXCEPT AS NOTED)		TCI An Allied Motion Company W132N10611 (Rev 1346) Germantown, WI 53022 © 2023 TCI, LLC
				DECIMAL	.XX ± .25 .XXX ± .10	
C	6413, Was KTR270A65HGP	9/19/2023	DSW	FRACTIONAL	± 1/16	KTR270A65HG DWN BY: DSW DATE: 4/22/2020 SCALE: 1/3 DESIGNED: 108583 CHECKED: C
B	6306, Design Updated	6/12/2023	DSW	ANGULAR	± 1°	
A	As Designed	4/22/2020	DSW			
NO	REVISION	DATE	BY			

A